

# Supercharging the Future Workforce with the Power of AI

Laxmi Narayana Piska

May 7, 2025





# Laxmi Narayana Piska

Digital Impact Consulting Leader  
Australia and New Zealand  
[laxminarayana.piska@hcltech.com](mailto:laxminarayana.piska@hcltech.com)

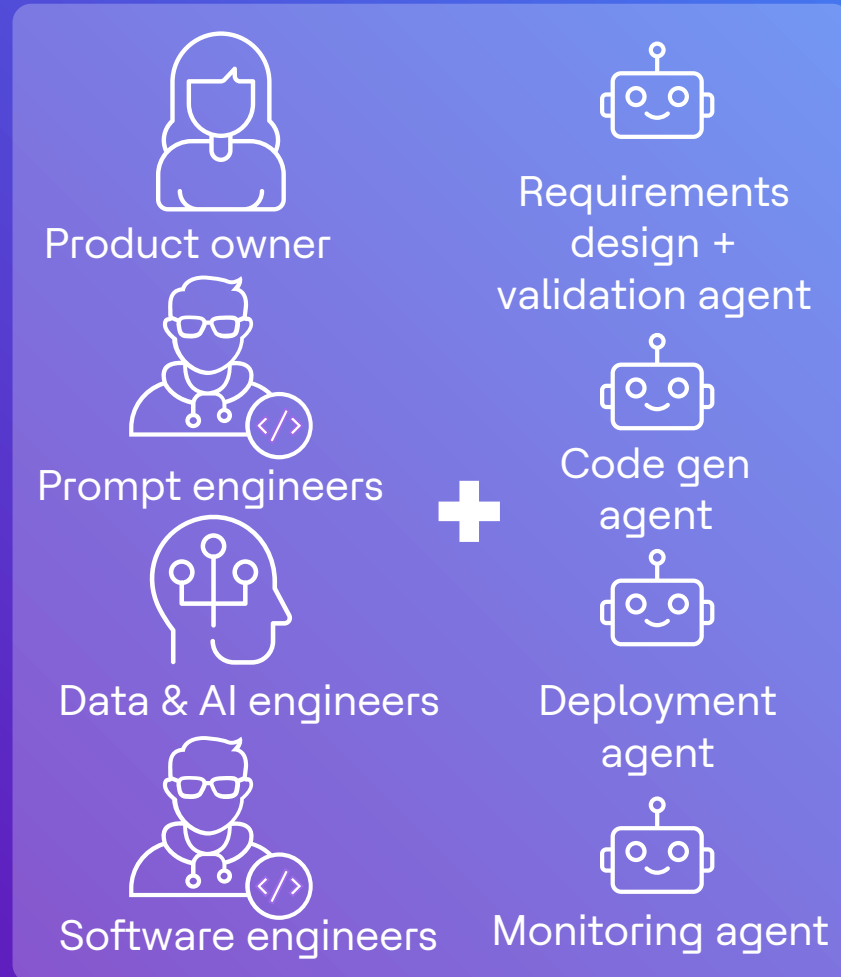


# The AI effect on squad models of the future

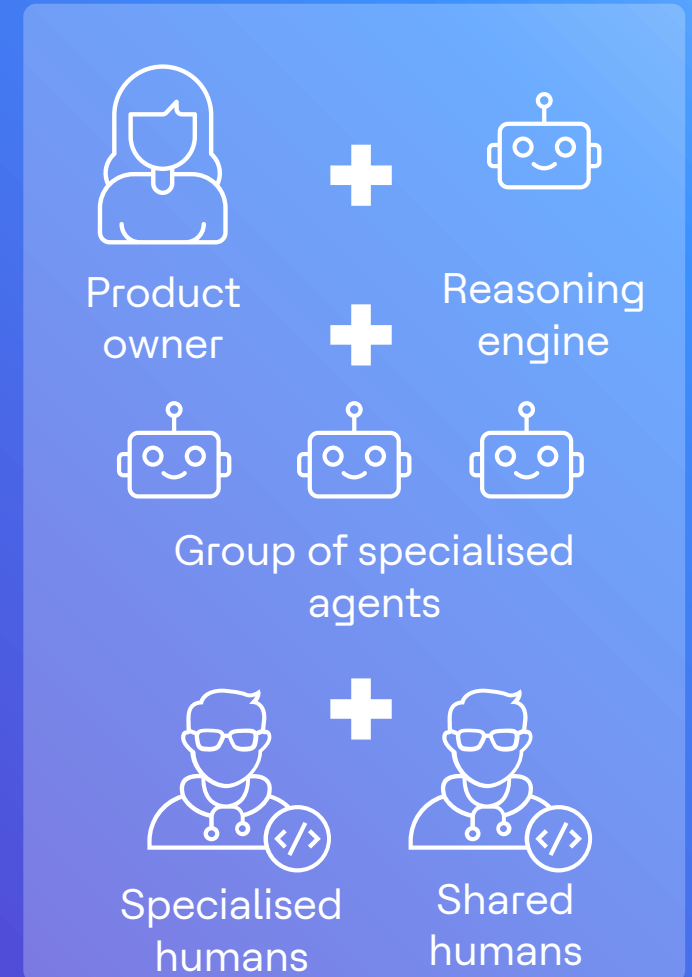
## 100% humans

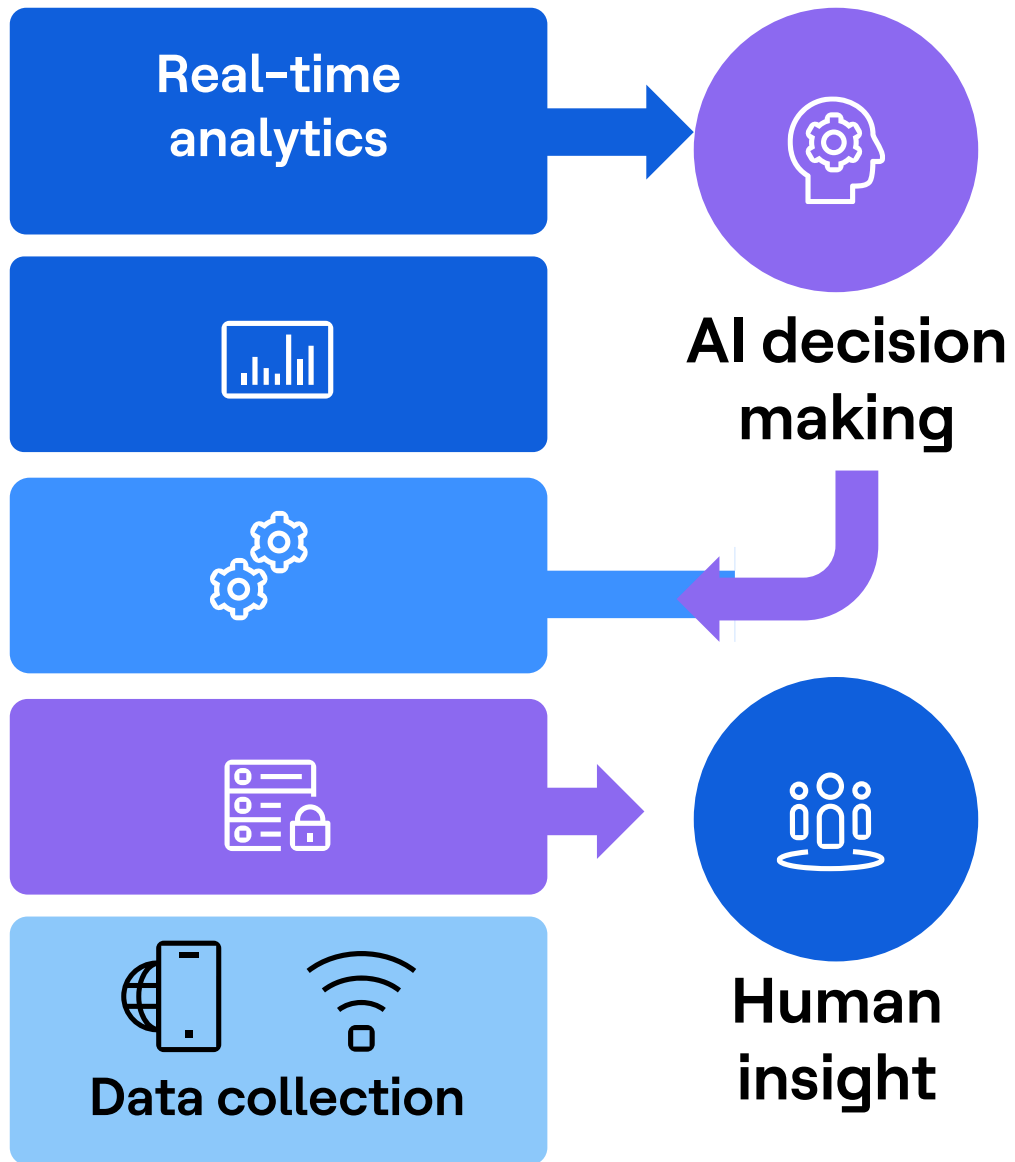


## Intermediate zone



## Future- autonomous

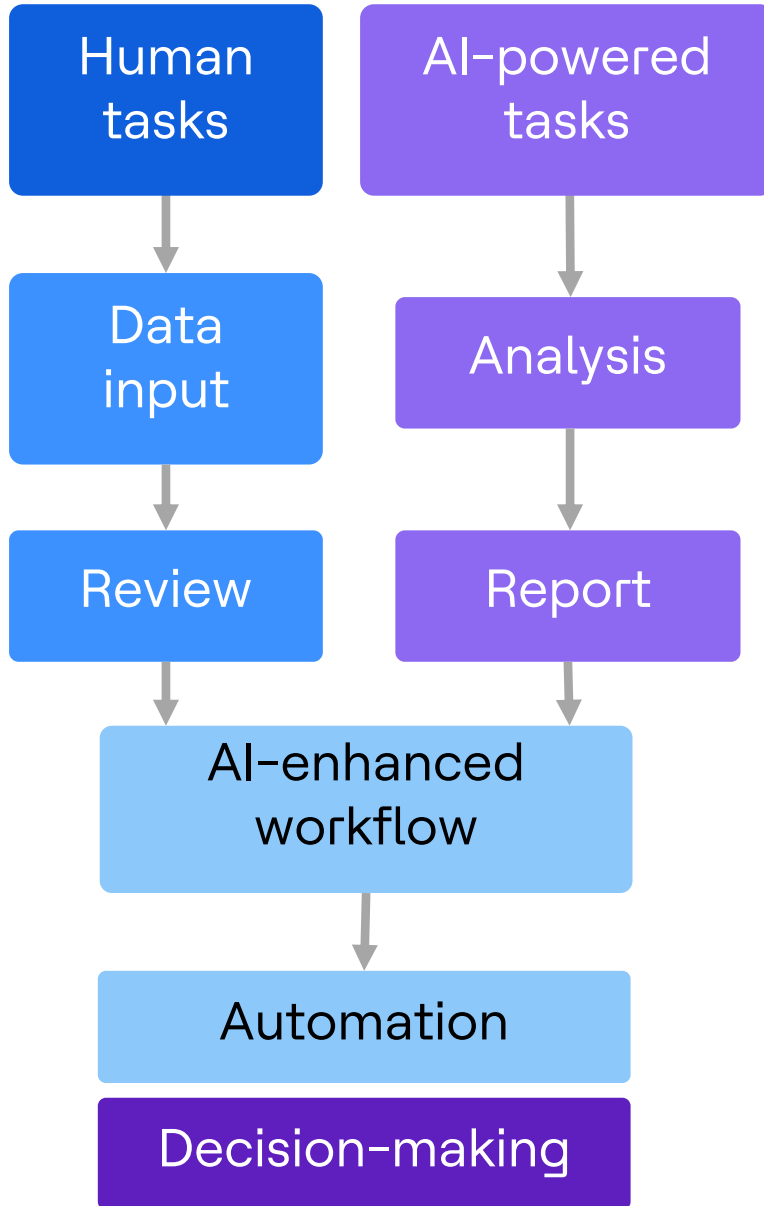




# Building a robust data foundation

Harness the full potential of AI with:

- 1 Solid data foundation
- 2 Robust data infrastructure
- 3 Real-time insights
- 4 Informed decisions

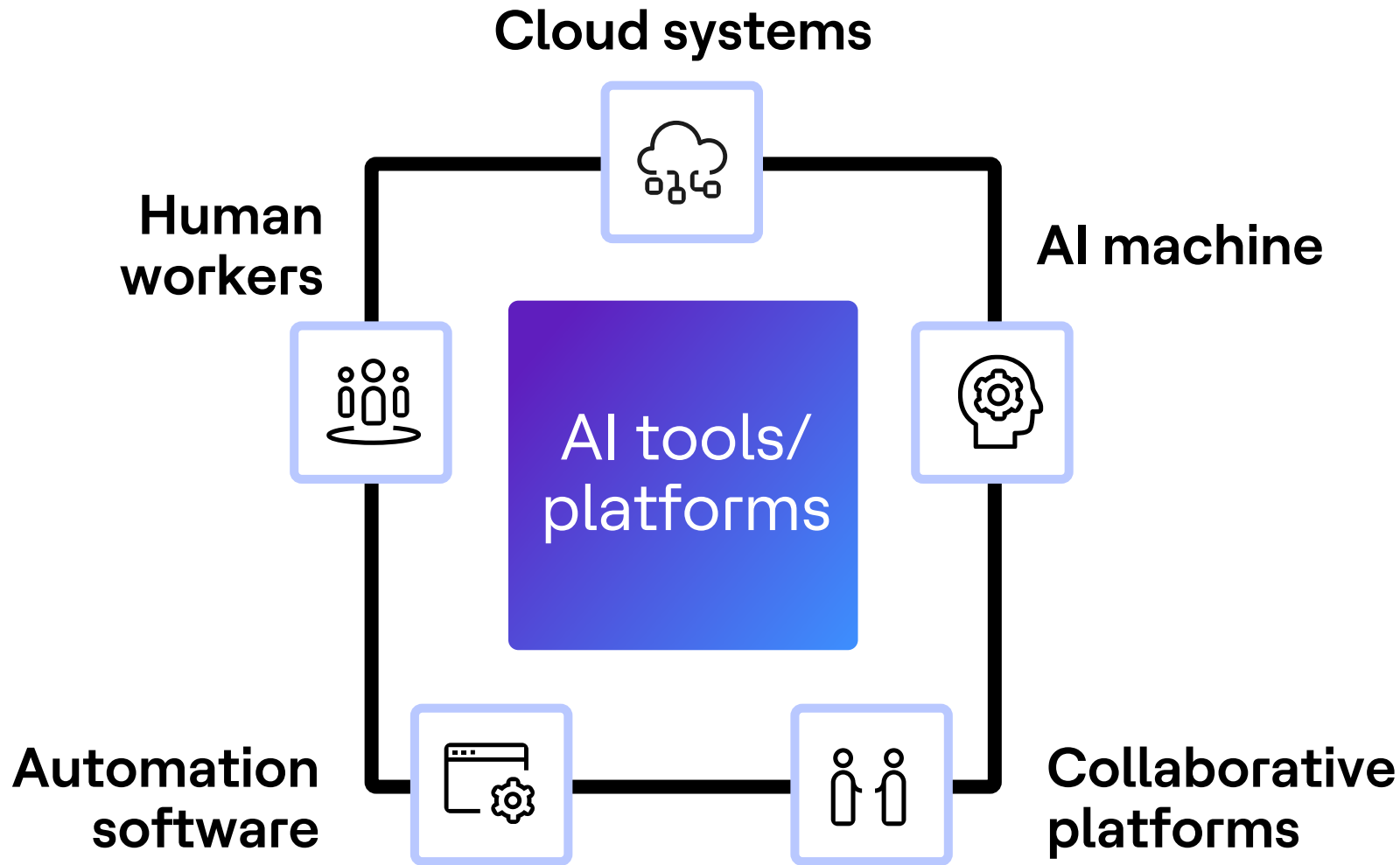


# AI as an enabler for transformation

- 1 Providing employees with personalised, data-driven tools
- 2 Greater decision-making efficiency
- 3 Empowering businesses by streamlining workflows, automating repetitive tasks
- 4 Enhanced work experiences



# AI tools and platforms for seamless collaboration



**1** Integrate AI into everyday work

**2** Right tools and platforms

**3** Seamless collaboration between humans and machines

**4** Optimising productivity while ensuring that AI is used ethically and scales with business needs

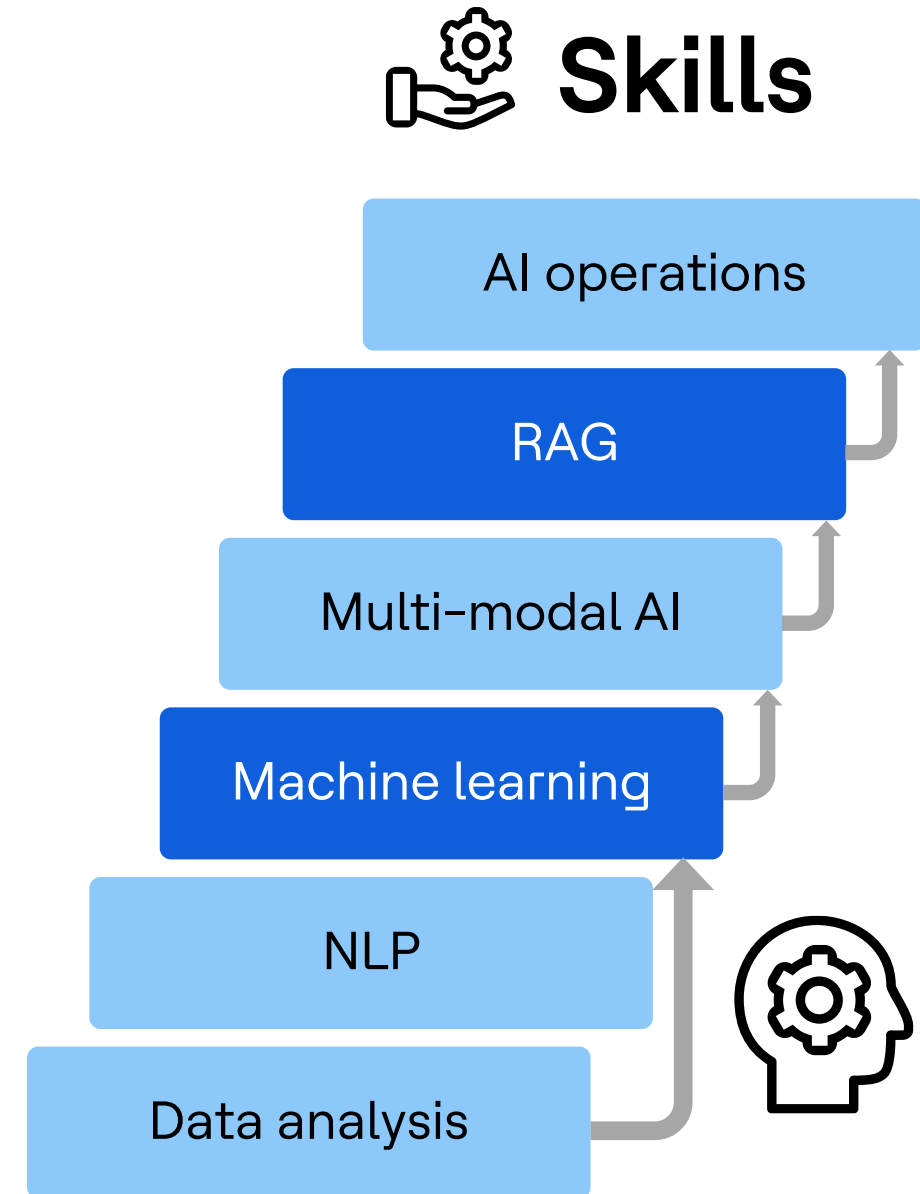
# Empowering the workforce through AI-driven upskilling

As AI continues to transform industries, upskilling the workforce is essential

AI-powered learning platforms:

- i. AI maintenance
- ii. Data curation
- iii. Algorithm training

Resources remain adaptable in a dynamic workplace



# Human-AI collaboration: Enhancing human potential

1



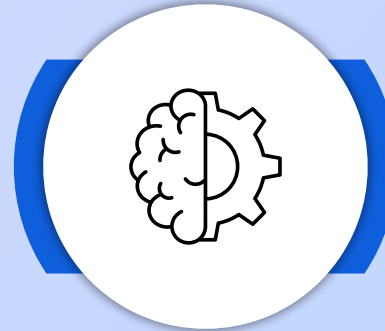
Fostering a  
collaborative  
environment

2



Focus on  
creativity,  
problem-solving,  
and decision-  
making

3



Human and  
machine synergy  
results in more  
innovative and  
efficient  
workflows





# Ethics and the future of work



**1** AI is integral to business processes

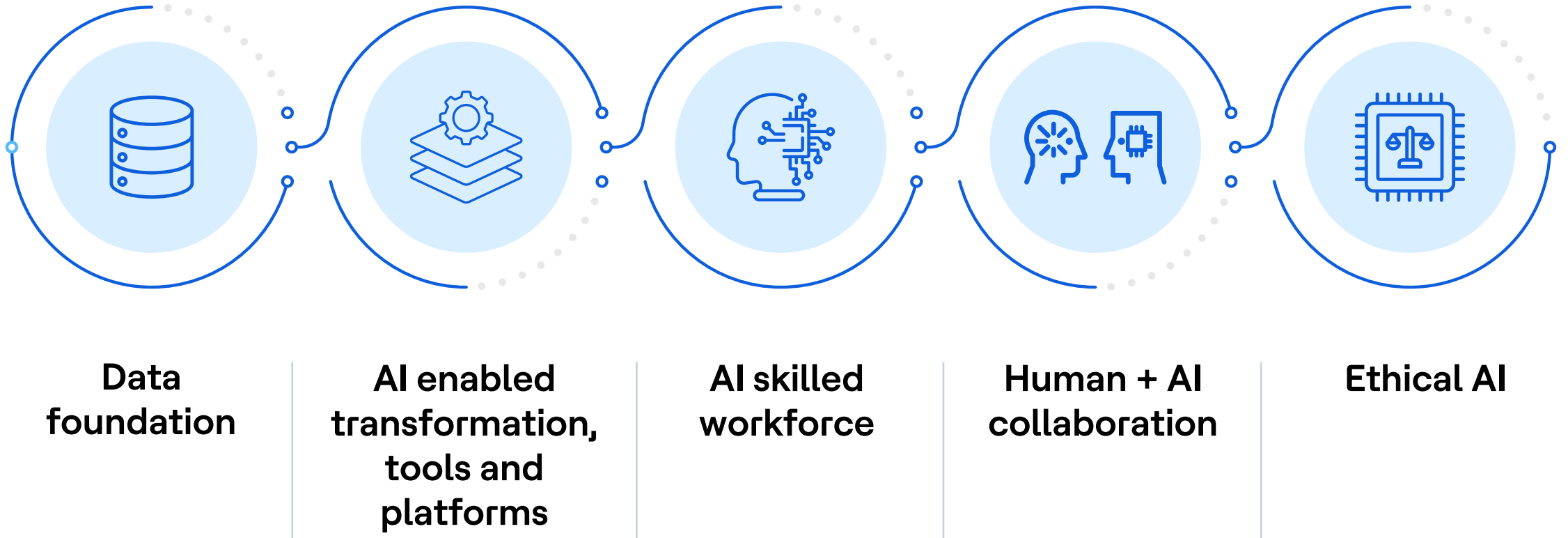
---

**2** Minimising job displacement, ensuring privacy protection

---

**3** Implementing AI systems fairly and transparently to create an ethical and inclusive work environment

# Supercharged AI-enabled operating model tenets



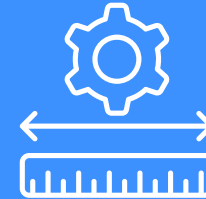
# Our reflections from the journey so far



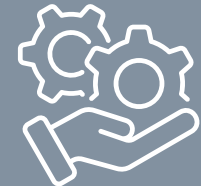
**Growth led**  
opportunities are  
on rise across  
enterprise



**Efficiency led**  
focus to drive  
service  
transformation has  
improved  
significantly



**Measurements**  
continue to evolve,  
need for uniform  
standards to  
measure



A more **outcome  
centric service  
behaviour** will drive  
faster acceleration



# It's the new fuel,

for growth and efficiency

Let's embrace it thoughtfully...

**HCLTech** | Supercharging  
Progress™

[hcltech.com](https://hcltech.com)