

SAP Business Technology Platform

Turn data into business value through an Enterprise Data Fabric

WHY

“Because a DATA FABRIC is the key enabler to leverage your data assets and speed up the drive towards the **Intelligent Technologies**

”



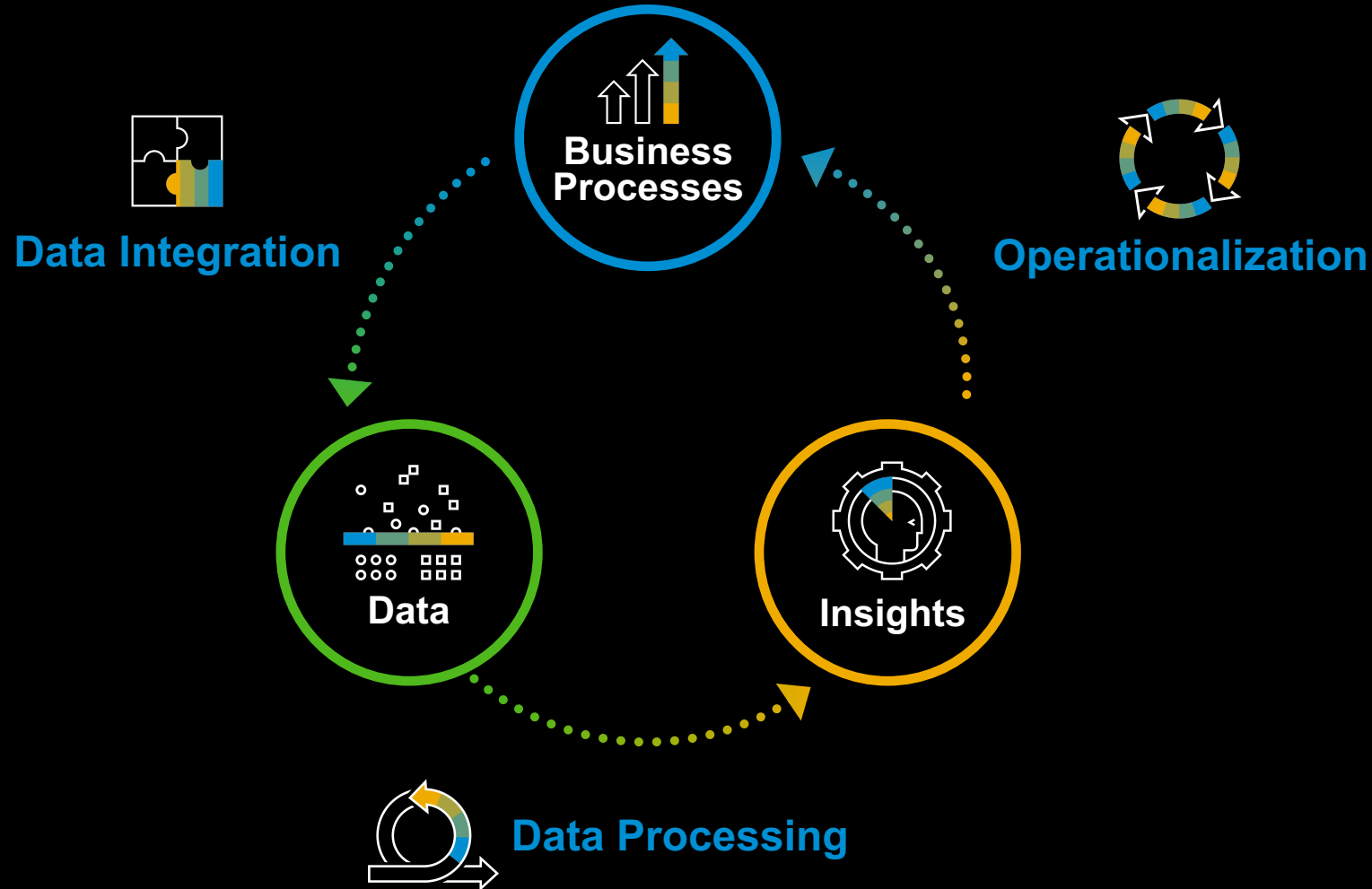
DEFINITION

What is an Enterprise Data Fabric?

“A **Data Fabric** is a design concept that serves as an **integrated layer (fabric) of data and connecting processes.**”

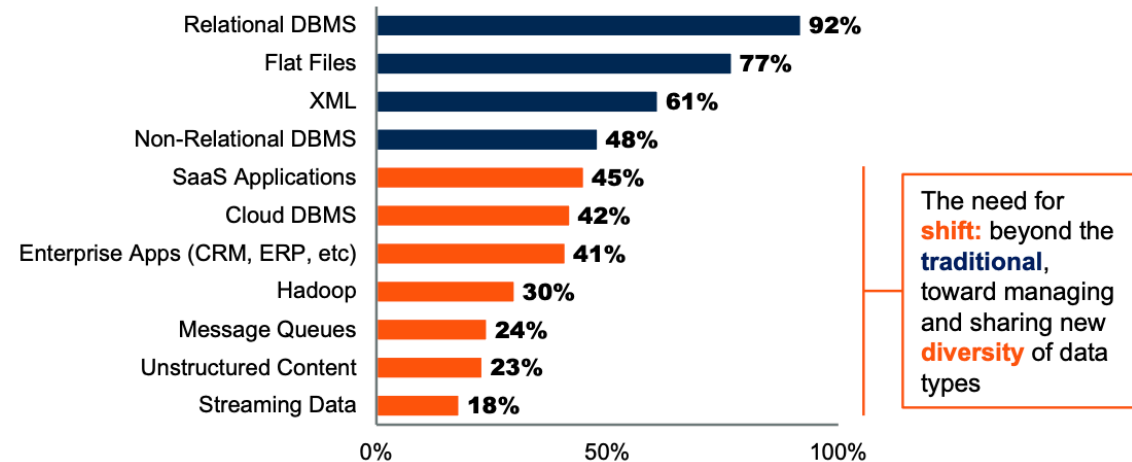
“A data fabric utilizes **continuous analytics** over existing, discoverable and inferred **metadata assets** to support the design, deployment and utilization of **integrated and reusable data** across all environments, including hybrid and multi-cloud platforms.”

The Objective: **End to End** Data Excellence and Management across your ecosystem.



The Reality: Enterprises **struggle to get there**

Data Integration Teams Are Under Severe Pressure to Integrate and Share Data From a Huge Number of Diverse Data Sources

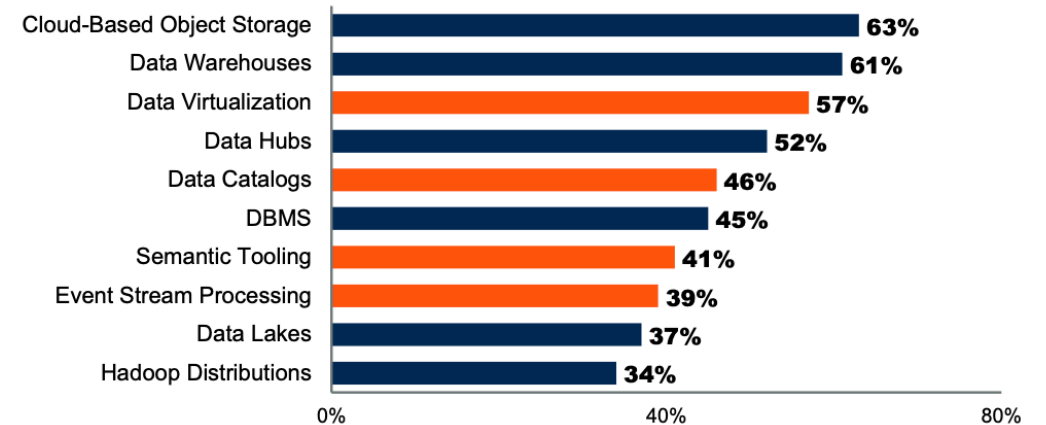


n = 352
Source: 2019 Gartner Data Integration Tools Usage and Adoption Study
Q: Which of the following types of data sources or targets does your organization currently support or plan to support with data integration tools?
6 © 2021 Gartner, Inc. and/or its affiliates. All rights reserved. Gartner is a registered trademark of Gartner, Inc. and its affiliates.

Gartner

Data Management Infrastructure Is Extremely Diverse — But Must Be Connected

Which data management infrastructure technology is your organization currently using?



n = 258
Source: P-18055 Data & Analytics Adoption Trends 2018
7 © 2021 Gartner, Inc. and/or its affiliates. All rights reserved. Gartner is a registered trademark of Gartner, Inc. and its affiliates.

Gartner

Source: **Gartner Data & Analytics Summit May 2022**

Why is it **so challenging**?



Semantics

"How can I gather end-to-end analytics without having to rework my applications' data models?"



Integration

"I need to join my sensor data with some image bitmap and the related ERP master data"



Persistency

"I use a data lake for offline processing of unstructured data, and a relational layer for reporting on structured data"



Processing

"I want to use Python for machine learning and combine it with HANA's predictive models"



Discovery

"What is this data? How was it gathered? What does it mean?"



Quality

"Can I rely on this data to drive decisions in a critical process? How can I easily clean it up?"



Distribution

"How can I join the dots between my on prem data and my various hyperscaler data centres?"



Operationalization

"How can actually infuse analytical insights back into my transactional processes, beyond reporting?"



Compliance

"Where am I storing personal identity information of German citizens?"

Why is it **so challenging**?

TENSION

Business Users

Ease of access

Speed of use

Advanced processing

New data sources

....

System Governance

Security of data

Quality of data

Meaning of data

Permissible data

...

SAP Platform Data & Analytics – **One platform for your success!**

An end-to-end **Enterprise Data Fabric** to turn **Data into Value**



Access and reuse
**application
semantics**



Access and reuse
tools



Connect any **3rd party
engine** and **data lake**



Gain an **end-to-end
understanding** of
your data



Build **end-to-end
analytics** & link them
to your **processes**

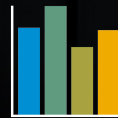
SAP Business Technology Platform

The Platform for the Intelligent Enterprise



DATABASE AND DATABASE MANAGEMENT

Capture, manage,
and **govern** your data
to drive better business
outcomes



ANALYTICS

Analyze all your data to
accelerate **insights** and
transform the data you have
into the answers you need



APP DEVELOPMENT AND INTEGRATION

Integrate and **extend**
applications – build new
ways to access and
interact with your data



INTELLIGENT TECHNOLOGIES

Data is the fuel
propelling intelligent
technologies forward –
optimizing processes,
and igniting **innovation**

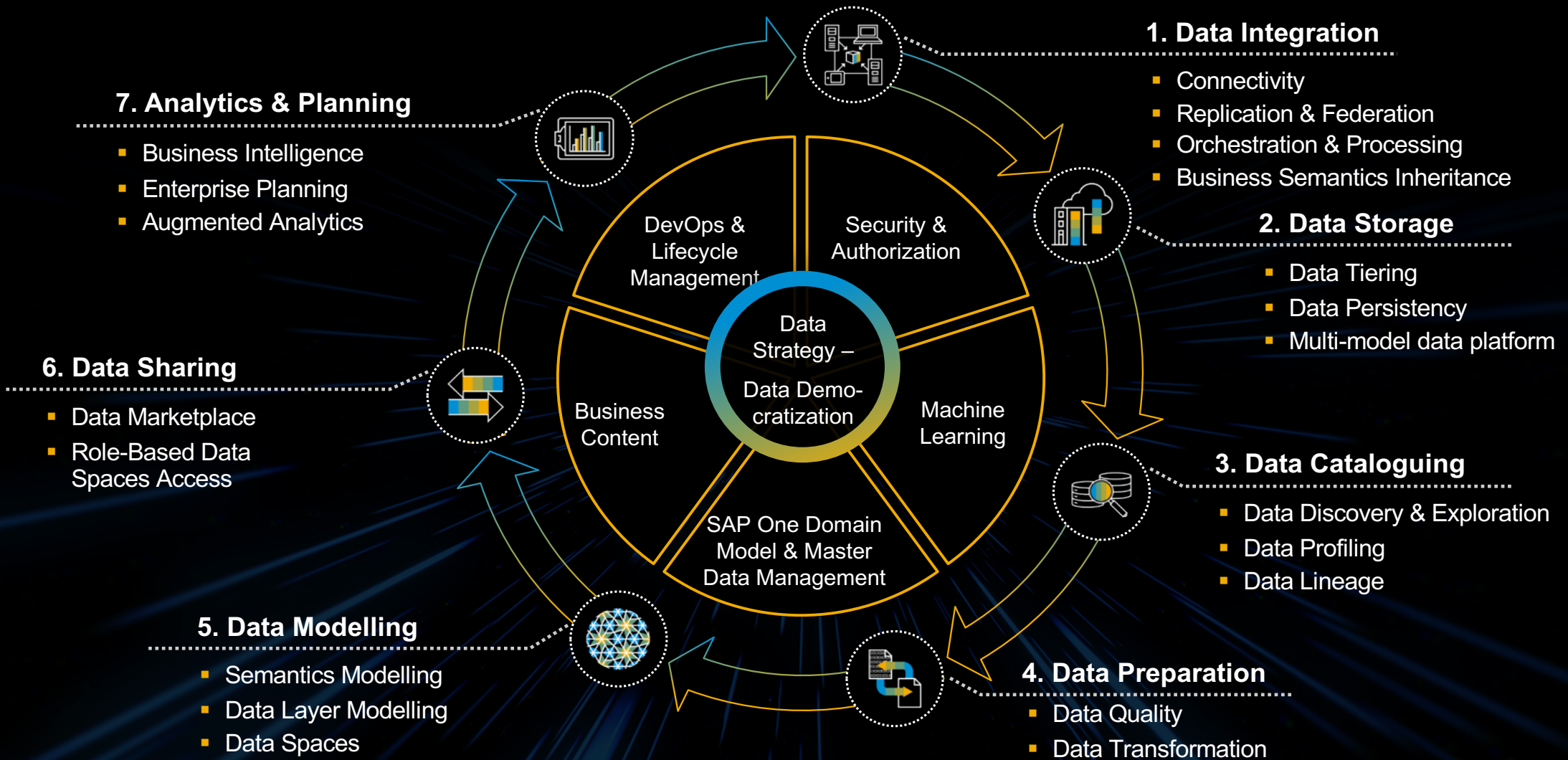
 Microsoft Azure

 aws

 Google Cloud Platform

 Alibaba Cloud

Technology practices which should form key part of your **Data Fabric**



SAP BTP Unified Data & Analytics

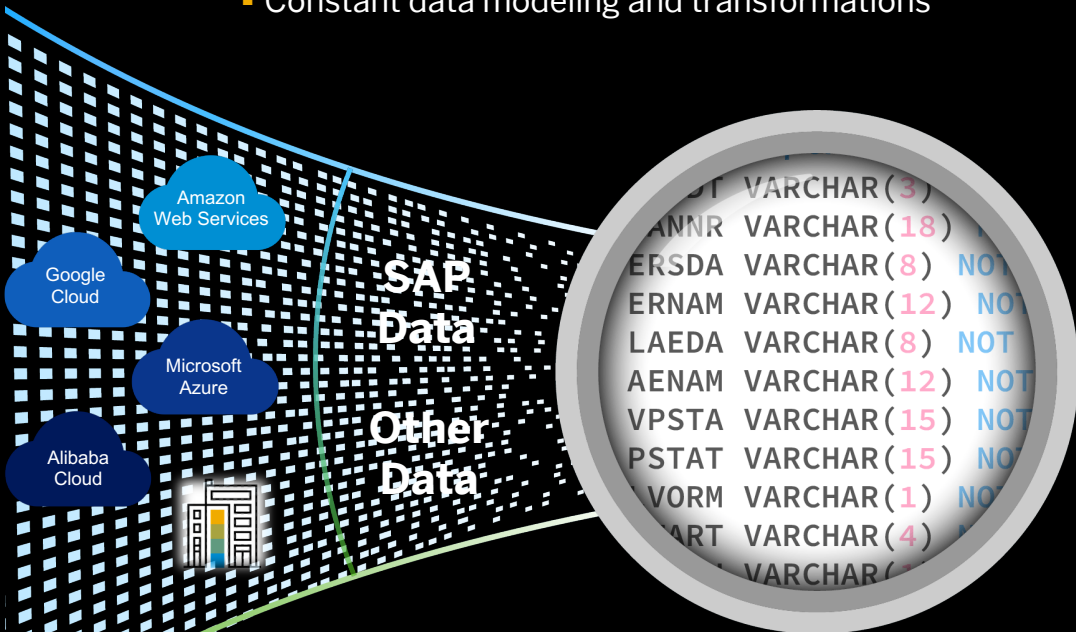
Connect data with business context



Business & IT
collaboration

Hyperscaler Approach

- Copy and move data to meet performance thresholds
- Make sense of obscure data structures and labels
- Constant data modeling and transformations

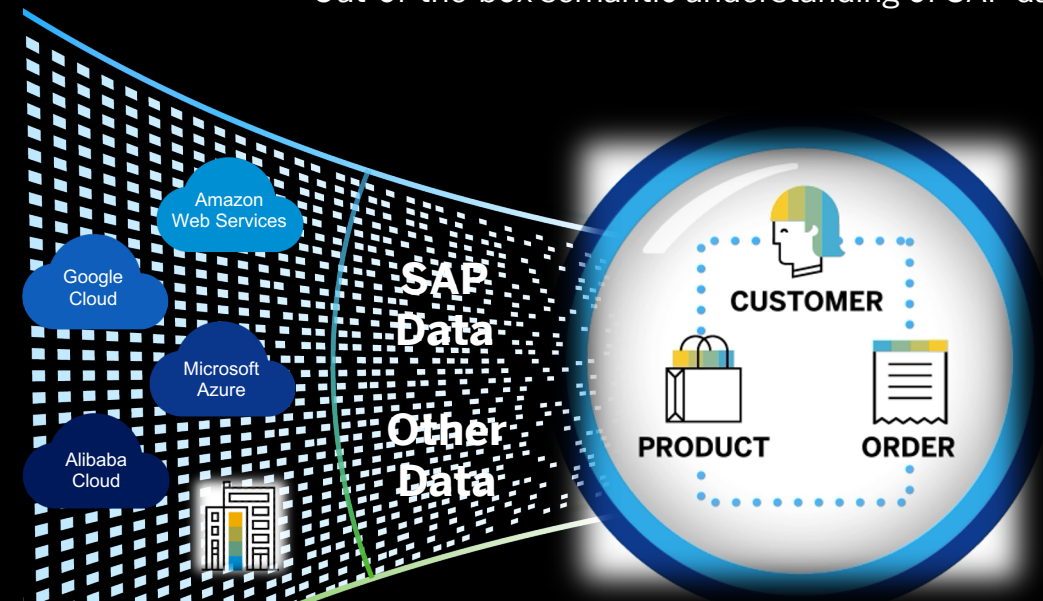


**Replicate or migrate data and
lose context**

VS

SAP

- Connect or collect data with optimized performance and TCO
- Insight on real-time data across clouds and on prem
- Out-of-the-box semantic understanding of SAP data



**CONNECT to Data and Give it
meaning**

Business Semantics

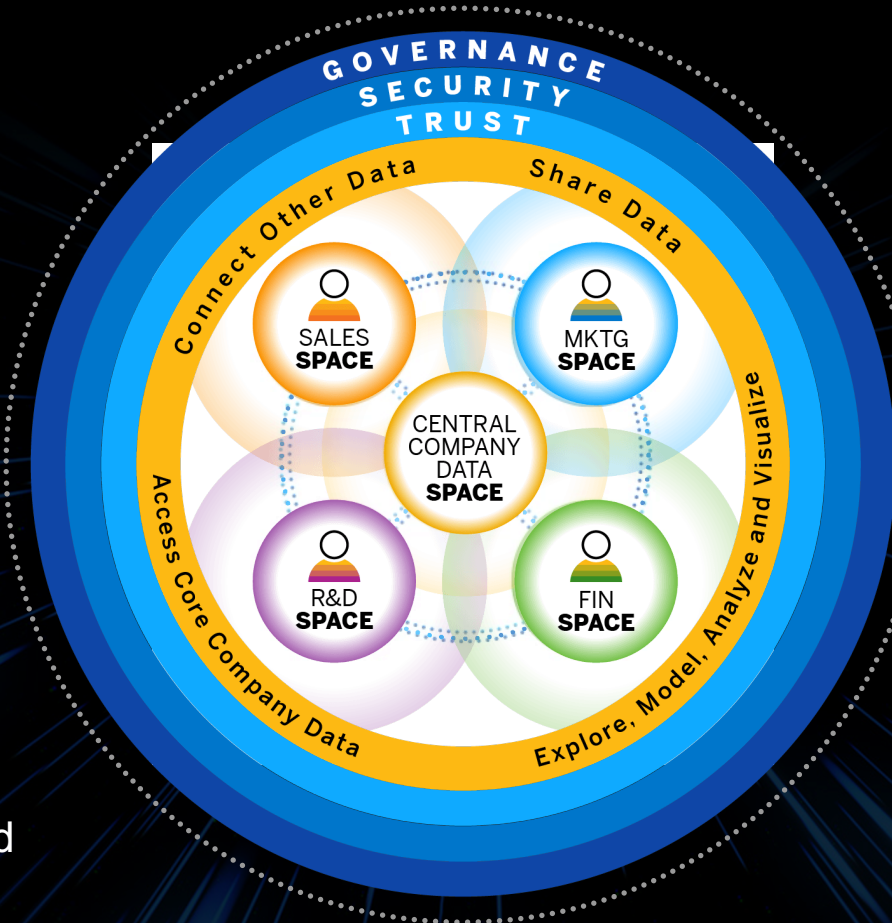
How it works



Connect own data from files and third-parties with company data within the zone of trust



Access core company data for self-service analytics – flexibly and securely



Share data and results with other user groups – with data remaining in the zone of trust



Explore, model, analyze and visualize data – working with data in business terms

empower business users
self-service
modeling and data integration while ensuring governance

Data Fabric with SAP – A rapidly growing customer base



[BTS Story - SAP Innovation Award 2020](#)
[TechEd 2019 session](#)



[BTS Story - SAP Innovation Award 2020](#)
[Video](#)

HARTMANN



[BTS Story - SAP Innovation Award 2020](#)
[Video](#)

Endress+Hauser

[BTS Story - SAP Innovation Award 2020](#)
[Video](#)

BOURNS®

[SAP Innovation Award 2021](#)



[BTS Story](#)



COMMONWEALTH of PENNSYLVANIA

[SAP Innovation Award 2020](#)



[BTS Story - SAP Innovation Award 2021](#)



[SAP Innovation Award 2020](#)



[Reference - SAP Innovation Award 2019](#)
[Video](#)

SAP Business Technology Platform – Data Fabric



Semantics



**A complete data platform,
conceived for business
outcome**



**Multi-cloud, agnostic
and open**



**Re-use existing on-
prem investments**

**Key Take
Aways**



Next Steps: Register for our free Trials

www.saphanajourney.com



Helping you realize the Data Fabric

Data Value Assessment



Industry Data Value Workshop Use Case Discovery

What is the purpose of the Data Workshop?


STAGES

INTRO

GET STARTED WITH MURAL

USE CASE DISCOVERY

Data Strategy Workshops




EDM Agenda and Overview - Charter and Briefing Document

Framework & Methodology

Questionnaire Templates

Customer Org Chart or Partner View (Key LOB's / Champions)

Innovation Workshops (incl AI)



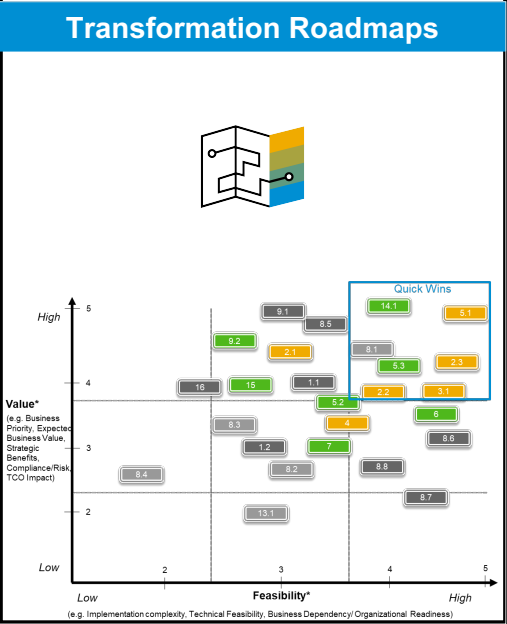
... And They Need to Enable Intelligent Innovation Use Cases Along the Value Chain

Utilities Industry Core Processes

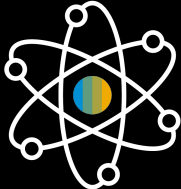
Decide with confidence and integrity

Connect processes and experiences

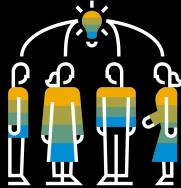
Continuously innovate



Bringing the best Global, Regional and Local Resources



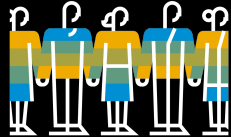
Data Science
Global CoE



Industry Value
Advisory



Regional CoE



Local Expert
Resources

Thank You



Contact me on LinkedIn: Jean-Claude Pizzi

WHY

“

Because a DATA FABRIC is the key enabler to leverage your data assets and speed up the drive towards the **Intelligent Technologies**”

”