

CAIO 2025



# AI-Driven Innovations in Healthcare and Emergency Services

Enhancing Care through Data Science and Machine Learning First

Dr J Rogel-Salazar

RogueLoop / The Ortus Group /  
Imperial College London / University of Hertfordshire  
[j.rogel@rogueloop.com](mailto:j.rogel@rogueloop.com)

Fen 12th, 2025

London, UK

# Hello

I am Jesús Rogel-Salazar

I go by J ...

Or as my friends and colleagues at call me:

Dr J



# Objective

The aim is to help customer focused organisations accelerate the impact of Artificial Intelligence, Machine Learning and Data Science for their customers and their business.

In this case we are talking about healthcare and ultimately patients

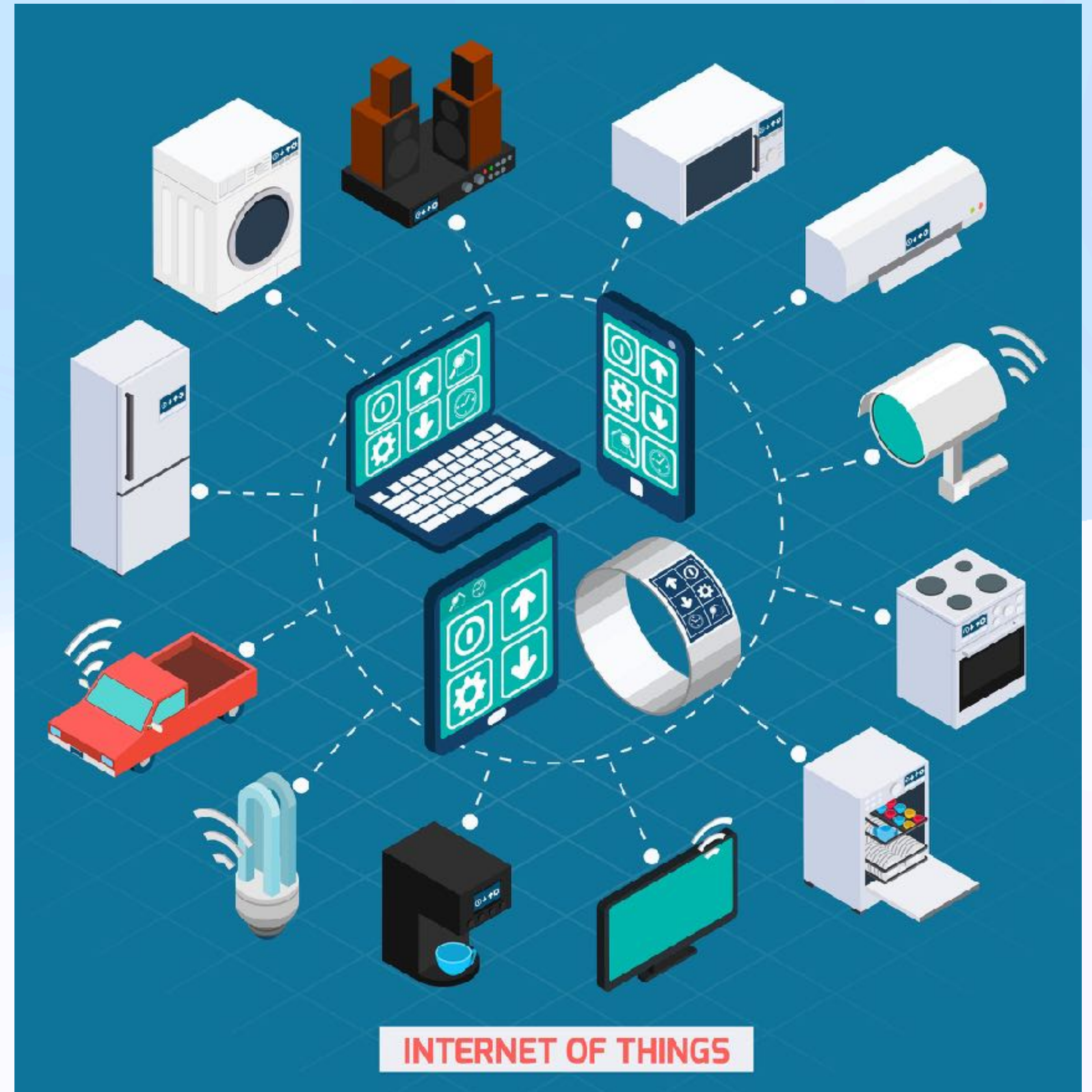


# IoT at Ortus

# Internet of Things

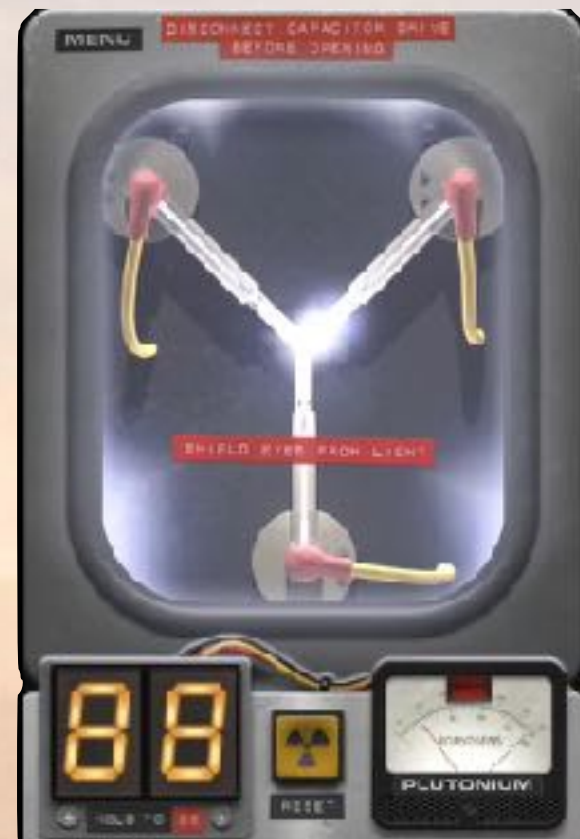
## A smart network

- A network of physical devices, vehicles, appliances and other objects embedded with sensors, software and network connectivity that allows them to collect and share data.
- “Smart objects” devices like smart thermostats, to wearables like smartwatches and RFID-enabled clothing or equipment and transportation systems.
- Creating a vast network of interconnected devices that can exchange data and perform a variety of tasks.
- Data can be analysed in real time to identify patterns, trends and anomalies that can help us optimise operations and improve workflows.









88  
MPH





# Dude, Where's my Car?

DUDE,  
WHERE'S MY  
DEFIBRILLATOR!?!

UH-OH...

MEANWHILE

# Paramedic



- Ensure she and her team are ready for a mission
- Ensure their vehicle is in working orders and has all the equipment needed
- Provide excellent care to her patients aided by timely alerts and notifications
- Have records pre-, during and post-mission

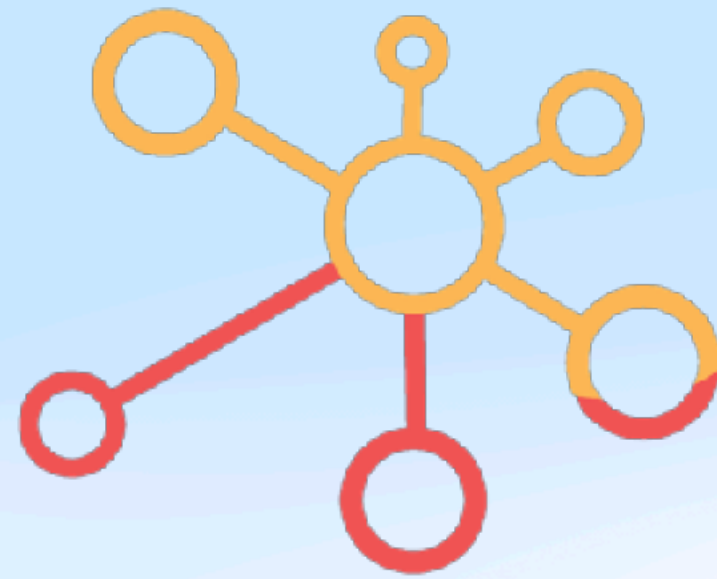
# Fleet Manager



- Know the location and information of the vehicles in the fleet
- Collect and transmit data on vehicle use, maintenance requirements and servicing
- Driving safety
- Monitor fuel usage and improve excessive idling, inefficient routes and other factors



Connectivity



Data



 insight



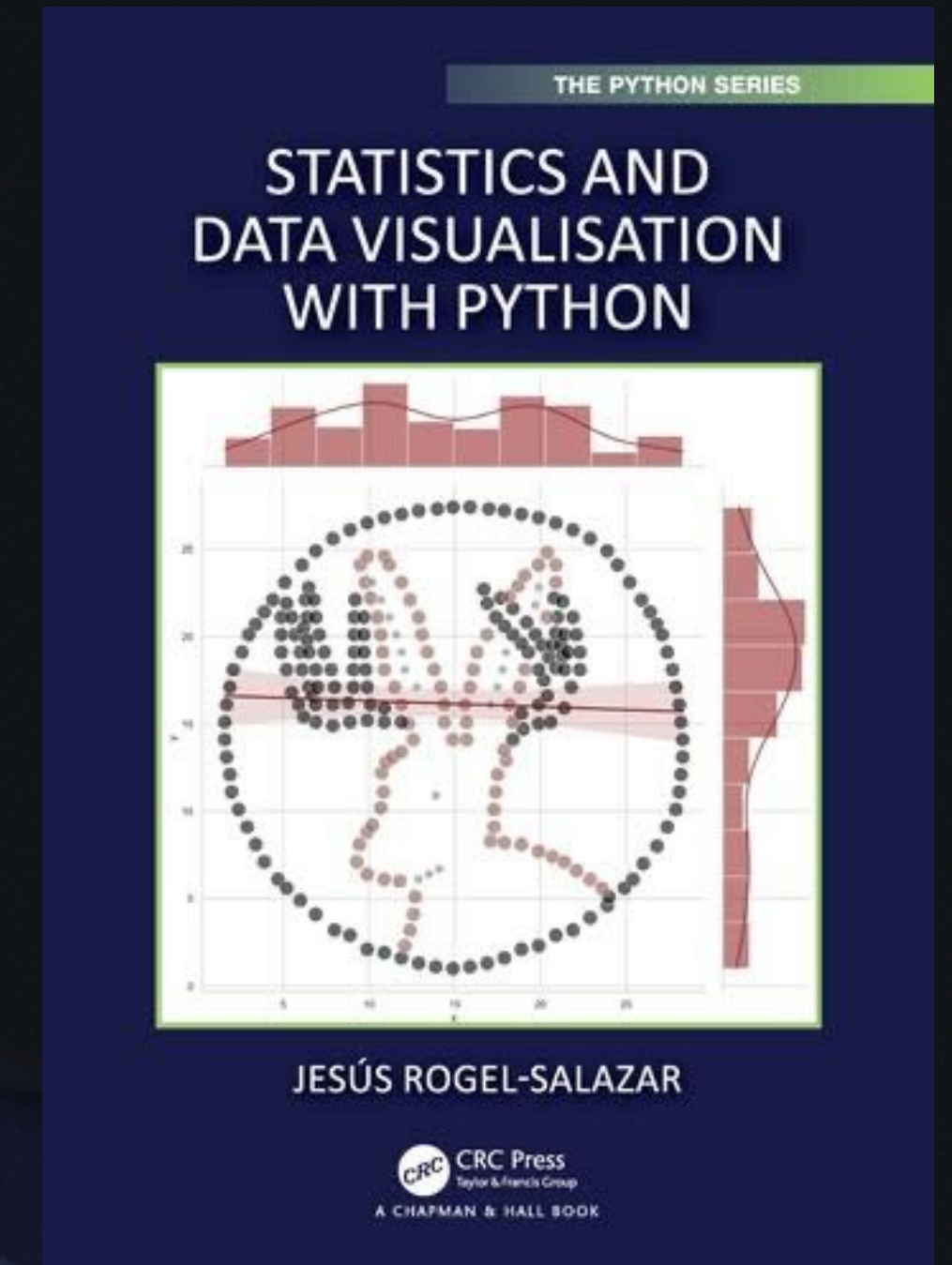
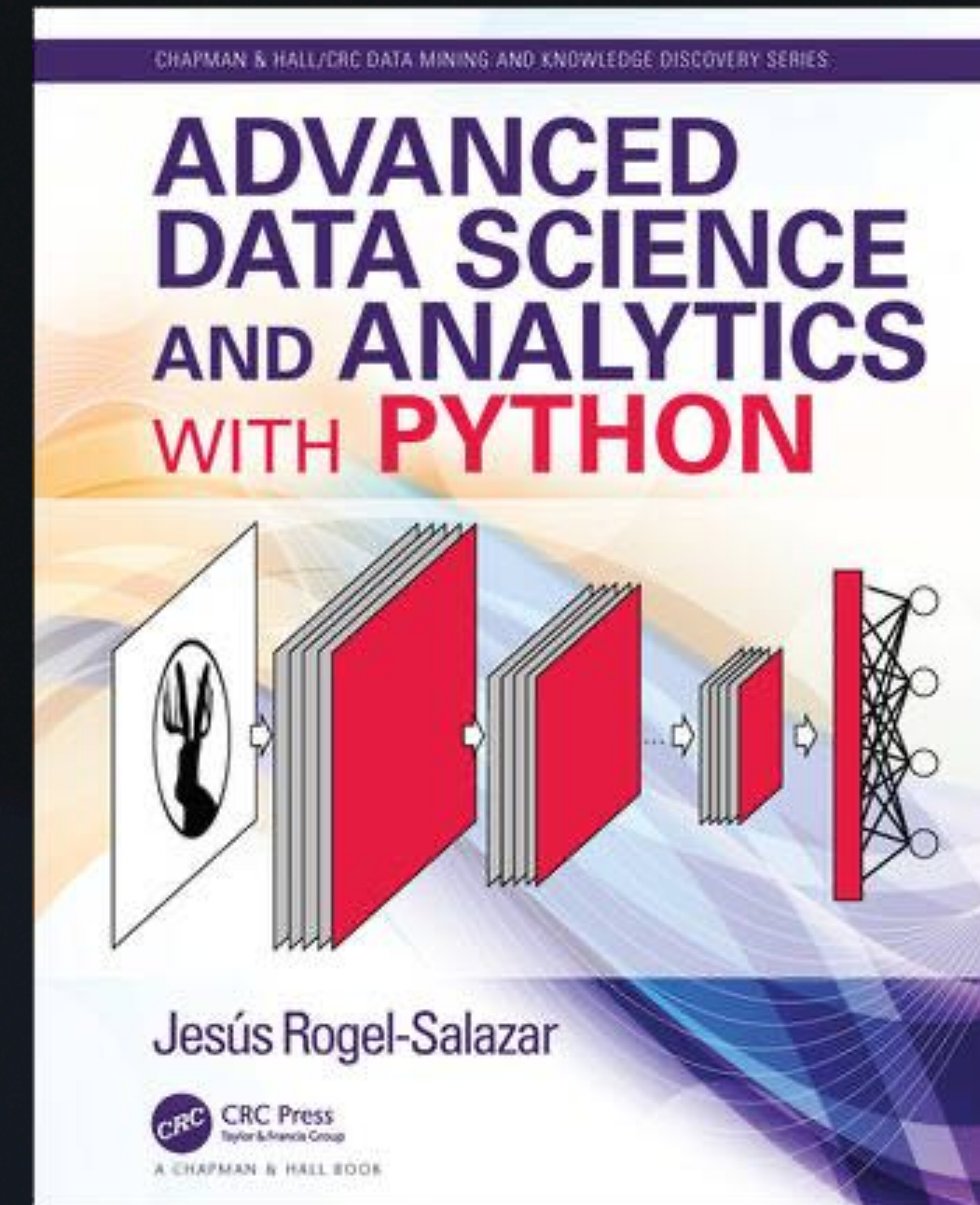
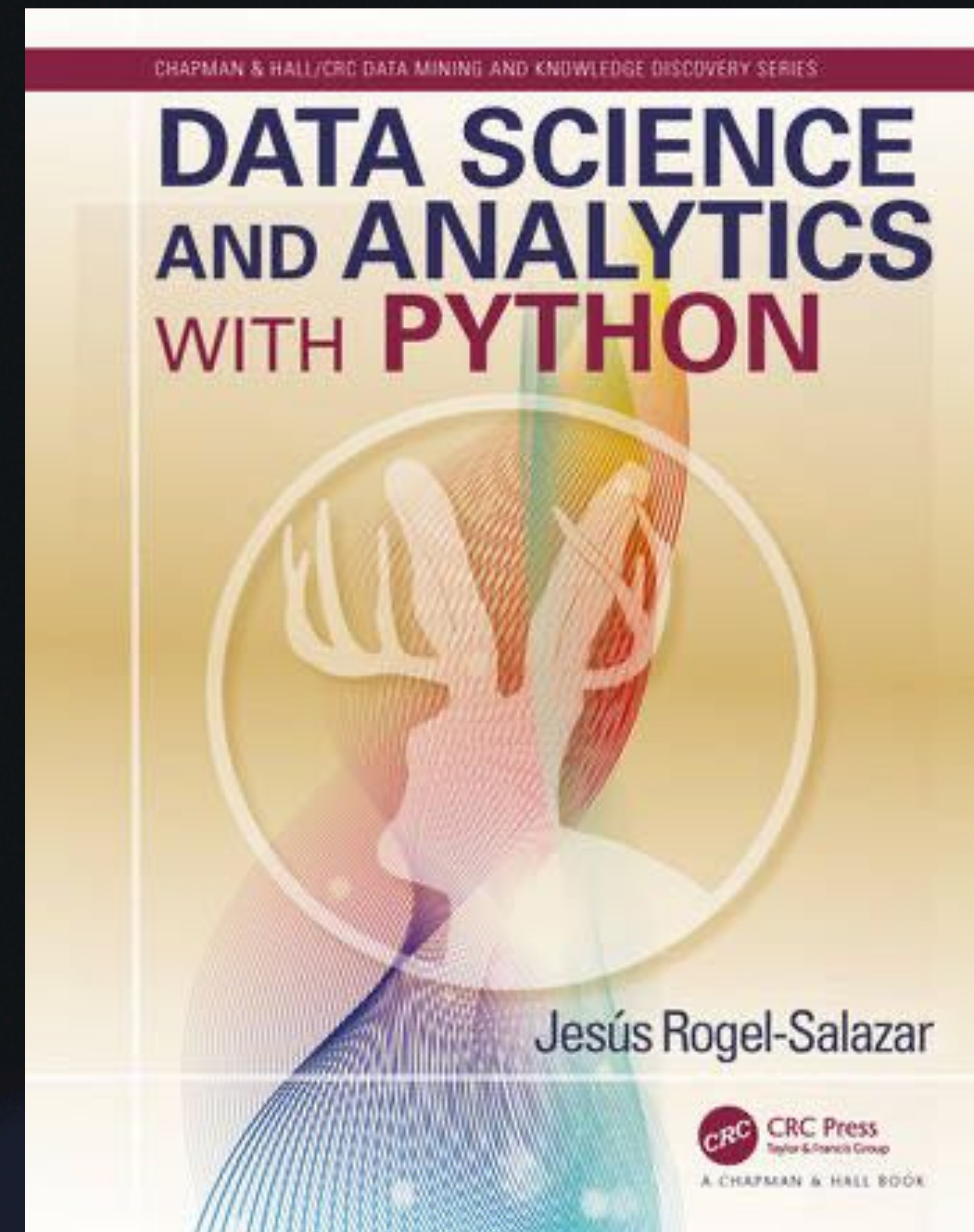
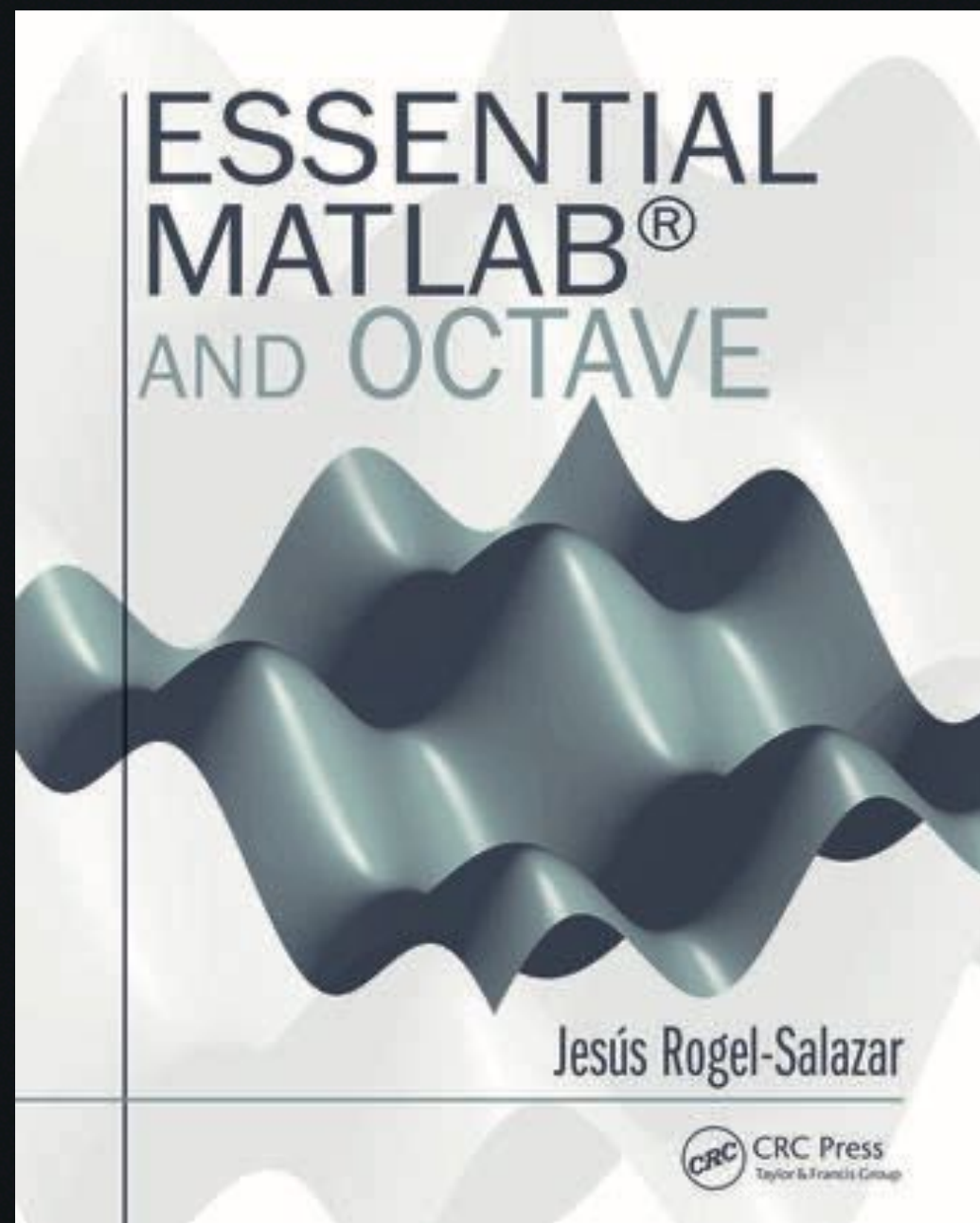
Context

# Predictive Maintenance

- Real-time Alerts:
  - Instant notifications for potential maintenance issues
  - User-friendly alerts indicating whether immediate action is required
- Vehicle Status at a Glance:
  - Quick access to the current health status of the vehicle
  - Conversational indicators about the overall condition of the vehicle
- Actionable Recommendations:
  - Clear recommendations for any preventive actions they need to take before heading out on an emergency call
  - User-friendly prompts guiding them on steps to ensure the vehicle's readiness



# In case you are feeling generous...



Thanks!!



Dr J Rogel-Salazar



