



Innovation and AI: What have we learnt in 2025?

Gina Choutis

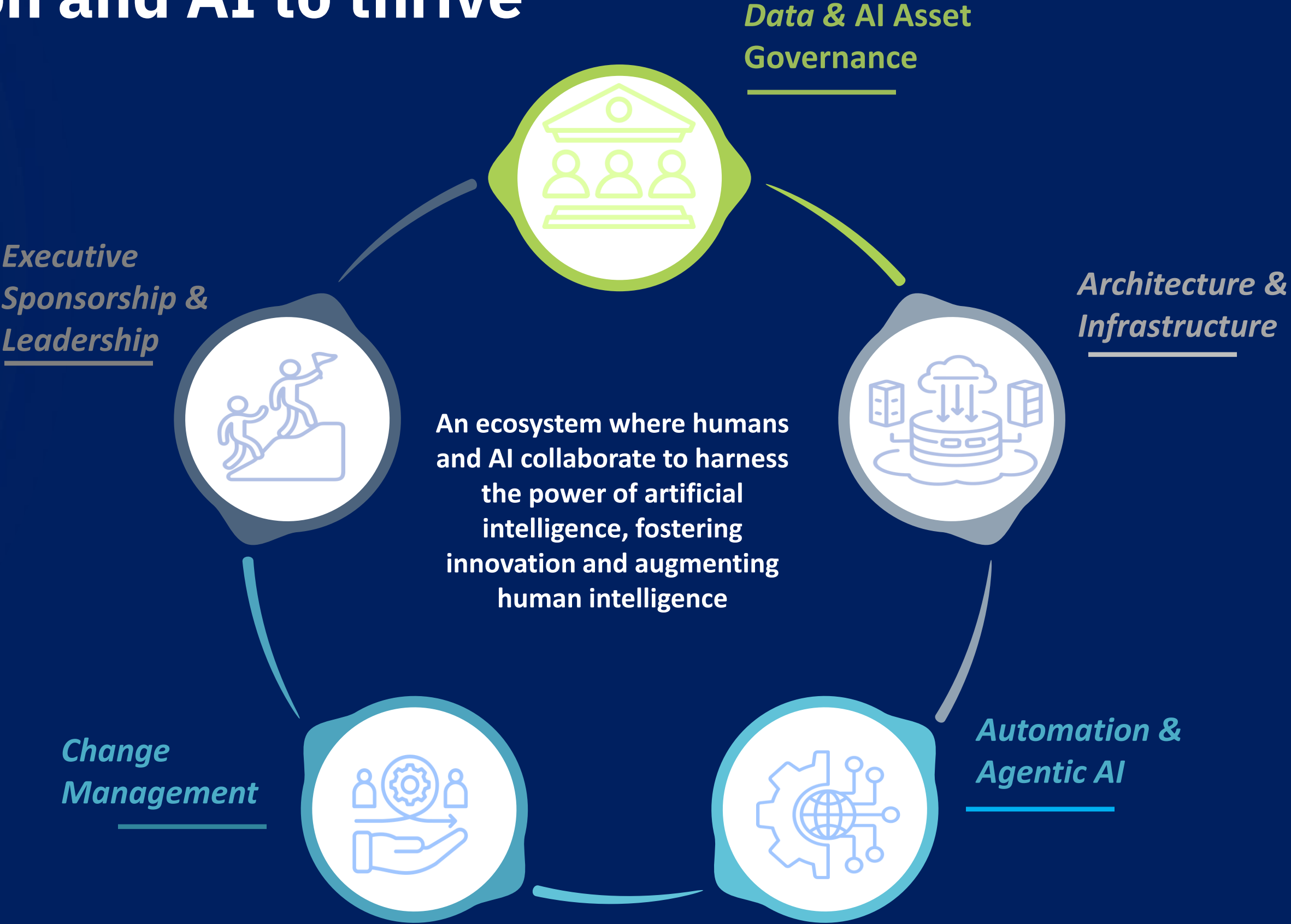
Innovation and AI: what we have learnt in 2025



“Scientific discoveries and technological innovations are stones in the cathedral of human progress.”

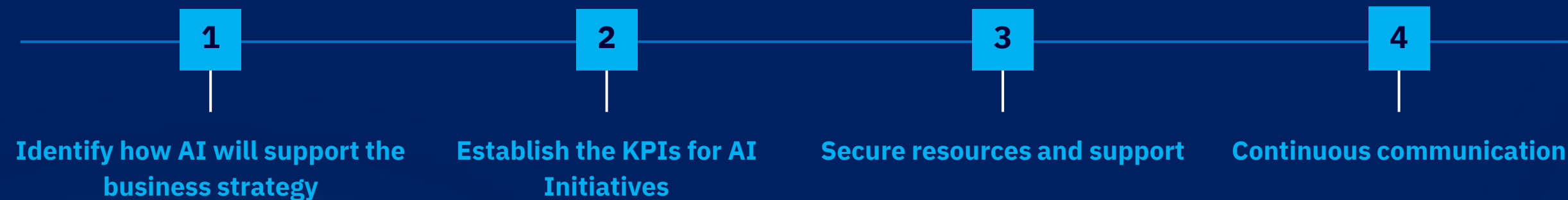
Reid Hoffman, cofounder of LinkedIn and Inflection AI, partner at Greylock Partners, and author.

Creating the Human & AI ecosystem for Innovation and AI to thrive



Executive Sponsorship & Leadership

Leaders must have a clear vision of how AI can augment human capabilities and drive business growth. This means not only understanding the potential of AI but also being able to communicate its benefits effectively to the team. A visionary leader sees AI as a tool that can help the organization achieve its goals more efficiently and looks for ways to integrate it seamlessly into the workflow.



Deploy Automation & Agentic AI at scale

- The most effective way to achieve the objectives set for a business and AI strategy, and to unlock capacity for people to innovate, is to automate and deploy AI agents at scale.
- This approach not only streamlines repetitive tasks but also enhances decision-making, drives operational efficiency, and fosters creativity by empowering teams to focus on higher-value, strategic activities.
- By integrating AI agents across functions, businesses can harness data-driven insights and agility, paving the way for sustainable growth and innovation.

**Identify Objectives
and Use Cases**

**Select Tools and Build
Solutions**

**Implement, Test and
Optimize**



Architecture & Infrastructure

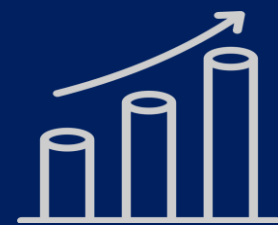
Building infrastructure and architecture to support AI requires thoughtful consideration of critical elements. It must align with your business and AI strategy to ensure successful deployment and long-term sustainability of AI solutions



**Data Storage & AI
Powered Management**



**Network &
Connectivity**



**Scalable Computing
Power**



**Integrated Frameworks and
Tools**

Data & AI Governance



While Data Governance and AI Governance are distinct streams, they must be interconnected to ensure that AI utilises, high-quality data.

Leveraging AI for data governance can significantly enhance your ability to detect biases in the data that may affect AI models and implement appropriate mitigations.



Data Governance

Aims to maintain data quality, compliance, and accessibility, empowering organizations to use data as a reliable asset for decision-making.



AI Governance

Focuses on minimizing risks like bias and misuse, while promoting transparency, accountability, and trust in AI technologies..

Change Management for AI Adoption

While AI Implementation and AI adoption are often used interchangeably, they are not the same. *Implementation* is the technical process of installing AI tools, integrating them into systems and making them available for use.

Adoption, however, is about people. It's the process of ensuring AI becomes a natural, effective part of everyday work.



Education

Empower through education. Investing in continuous learning and development will equip employees with the necessary skills and knowledge to work alongside AI.

Inclusivity

Involve employees in the AI integration process. An inclusive strategy ensures that AI is implemented in a way that benefits everyone.



Embracing the Opportunities of Innovation and AI

AI has the potential to transform our world for the better. By embracing its opportunities and addressing its challenges, we can create a future where AI empowers us to achieve greater things.



Let's continue the conversation!



www.linkedin.com/in/gina-choutis

