

2024

ABOUT GWI

Who we are and the **impact** we create for clients

gwi

WHAT WE DO

We are a national team of unbiased, independent advisors to government, business and communities.

WHO WE ARE

We are trusted to unlock the potential of information and data to create business value, and solve our customers' most perplexing problems.

WHY WE EXIST

We work for impact, giving our clients the evidence to make good decisions, and the roadmap and resources to execute with confidence.

Our Story

How end-to-end service offering delivers value to our customers

Since 2008, **GW**I has been committed to solving complex problems and creating positive impact for customers. Through our award-winning advisory business, **GW**I, we have been proud to pioneer a new brand of management consulting. One that is led by impact and driven by data. Our diverse team of consultants are leaders in their respective fields and passionate about tapping into the potential of data, information and technology to make a real difference.

GWI proudly offers end-to-end capabilities for our customers through **gwi.digital**. Specialising in data platforms, core system implementation and managed services, gwi.digital brings the big ideas for data and digital to life. Backed by the CEO Ian Roderick, who brings over 20 years of experience across every part of the digital ecosystem, and the expertise of GWI, gwi.digital will support you on your transformation journey.

gwiadvisory

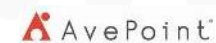
gwi

gwi.digital

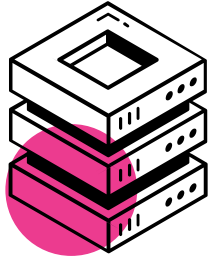
Our advisory business, **GW**I, is proudly ISO9001 certified. We have also received national recognition for our commitment to diversity, equity and inclusion through Great Places to Work and Women in Technology.



gwi.digital proudly partner with technology providers to support customers on their implementation journeys. These partners are not associated with GWI Advisory.



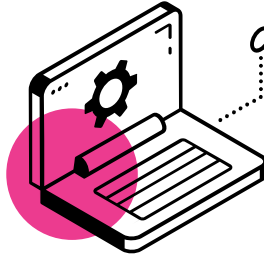
We combine data, digital and strategy to deliver **impactful** outcomes



DATA & INFORMATION

- Enterprise Information
- Data Transformation
- Enterprise Data

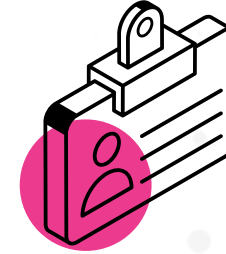
CLIENTS WE'VE SUPPORTED



TECHNOLOGY ADVISORY

- ICT Planning
- ICT Investment & Assurance

CLIENTS WE'VE SUPPORTED



STRATEGY & PUBLIC POLICY

- Understanding Community Needs
- Developing the plan
- Implementing the Community benefits

CLIENTS WE'VE SUPPORTED



Data & Information

Our data and information practices and services



ENTERPRISE INFORMATION

Our practice provides our clients with expert, practical approaches that support in the uplift of their enterprise information management maturity to derive value from their information assets and mitigate information risks.



EIM Strategy



Records Management



Document Management



Information Privacy & Security



Information Sharing

DATA TRANSFORMATION

Our practice works with our clients to support their data transformation journey through the enablement of a consolidated view of data, providing a clear understanding of how their data has been transformed, and delivering visual insights that drive strategic growth.



Data Modelling



BI and Warehousing



Data Platform Planning



Data Profiling



Data Migration Planning



Data Story Telling & Analytics

ENTERPRISE DATA

Providing clients with expert advice on strategy, operating model, governance, privacy and ethics. We deliver value through an engagement model or product offerings.



Data Strategy



Governance



Architecture



Data Protection



Data Ethics and Quality



Data Literacy

Technology Advisory

Our technology advisory practices and services



ICT PLANNING

We take an integrated approach to ICT, combining services, people, information and technology to provide pragmatic advice that adds value to businesses and individuals alike.



Digital & ICT
Strategy



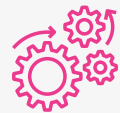
Enterprise
Architecture



ICT
Governance



Essential 8
Assessment



ICT Operating
Model



Application
Portfolio Review

ICT INVESTMENT & ASSURANCE

We take a holistic approach through varying capabilities, methods and services to ensure our clients' investment and assurance in technology is aligned, enabling, and valued by the business creating a meaningful impact.



Business Case
Development



Benefits Realisation
Planning



Strategic
Procurement



ICT options
Analysis



Portfolio
Planning



Assurance

Strategy and Public Policy

Our technology advisory practices and services



The Smart Way Forward

ROCKHAMPTON REGIONAL COUNCIL



#SmartDarwin

CITY OF DARWIN



Smart Townsville

CITY OF TOWNSVILLE



Scenic Rim Smart Region Strategy 2022-2032

SCENIC RIM REGIONAL COUNCIL



Smart Central Western Queensland

REMOTE AREA PLANNING AND DEVELOPMENT BOARD

Recent client outcomes

Examples of tangible impact created with our clients

+\$3Bn
in won contracts

Major Telco & QLD Government

To date, GWI has assisted with large and complex bids with a shared contract value in excess of \$3bn AUD.

End-to-end bid support services.

Account Intelligence and Strategy Development.

Economic & community
benefit dashboards

QLD Member Organisation

Discovered correlation between the organisation and a reduction in inactive adults in the population.

Increased the organisation's data literacy and understanding of the power of data.

Developed an interactive dashboard being used in negotiations with government and to supply data insights to members.

Missing child
data sharing solution

QLD Government Department

Developed the business case for an information sharing agreement across six QLD government agencies.

Reduced time to find a child missing from out-of-home care.

Reduced time to share relevant information at the outset of a missing child investigation.

Scientific
data sharing

QLD Government Department

A five-year roadmap that outlines actions and options to improve how ESR collects, manages, and shares environmental and scientific monitoring data.

Increased re-use of common data across the business

Agreed definitions and terminology

Improved business processes utilising reliable master data elements.

Recent client outcomes

Examples of tangible impact created with our clients

Information Management Framework & Policy

Energy Company

Delivered the project concept brief, scope statement, project charter and business case to improve IM capability.

Benefits included access to authoritative information sources; reduced rework; more effective employee collaboration; and a reduction of storage and time overheads relating to information duplication, silos and discoverability.

Information Architecture to support business process

Energy Company

Developed an Intranet Migration Approach

Developed an Information Architecture Design and governance model

Improved the ability to share and exchange information

Set content classification standards

Provided vendor support for future migration activity

Project Assurance Electronic medical Records

Healthcare Provider

Provided independent project assurance to establish an electronic medical records (EMR) system.

GWl conducted a Gate 4 review (Readiness for Service) to assess the health of the project, including the readiness of the solution and business for handover.

We delivered recommendations to support hospital ICT decision making, minimising risk to the hospital, its patients and its staff.

ICT Program Planning & Review

Regional QLD Council

Delivered a Project Management Plan, Tender planning and evaluation approach, including contract design principles and Program benefits.

Business Case and PLA.

Planning for go to market, including procurement approach, evaluation planning and contract design.

Program Management Plan, including scope and approach, work packages and resourcing model, governance framework and program controls.

Recent client outcomes

Examples of tangible impact created with our clients

AI Assurance

QLD Government Department

Determined the requirements of an AI assurance process, in line with Australia's AI Ethics Principles.

Recommendations to strengthen project assurance for the QChat AI initiative.

Repeatable process to be used to prepare for future AI assurance activities.

Data Governance Framework & Operating Model

NSW Government Department

Developed an Information Governance Framework.

Designed a fit for purpose data governance operating model.

Onboarded data stewards and custodians.

Fine Modernisation Program

QLD Government Department

Delivered a compelling, compliant and robust business case for a Queensland Government Department to seek funding for Stage 2 of the Fines Modernisation Program (circa \$45M project).

Provided architecture assurance services for the complete fine and debt overhaul program.

Data Governance Framework & Operating Model

Financial Services Provider

Development of a data governance framework outlining the financial services provider's data management environment.

Development of an operating model to operationalise data governance practices, controls and escalation processes.

Improved data quality.

Testimonials

“There are very few organisations I would consider as a trusted partner; **GW** is **one**. The team demonstrate the highest level of professionalism and differentiate through deep customer insight, personalised service and a relentless focus on outcomes.”

SENIOR STAKEHOLDER

“GW developed an **Information Management (IM) framework and policy**, structuring and maturing our organisation’s information management capabilities.”

PROJECT EXECUTIVE

Why choose GWI?

Supporting your enterprise data management and operations



Quality assured: ISO 9001



National reach, east coast based



Trusted by our partners to deliver



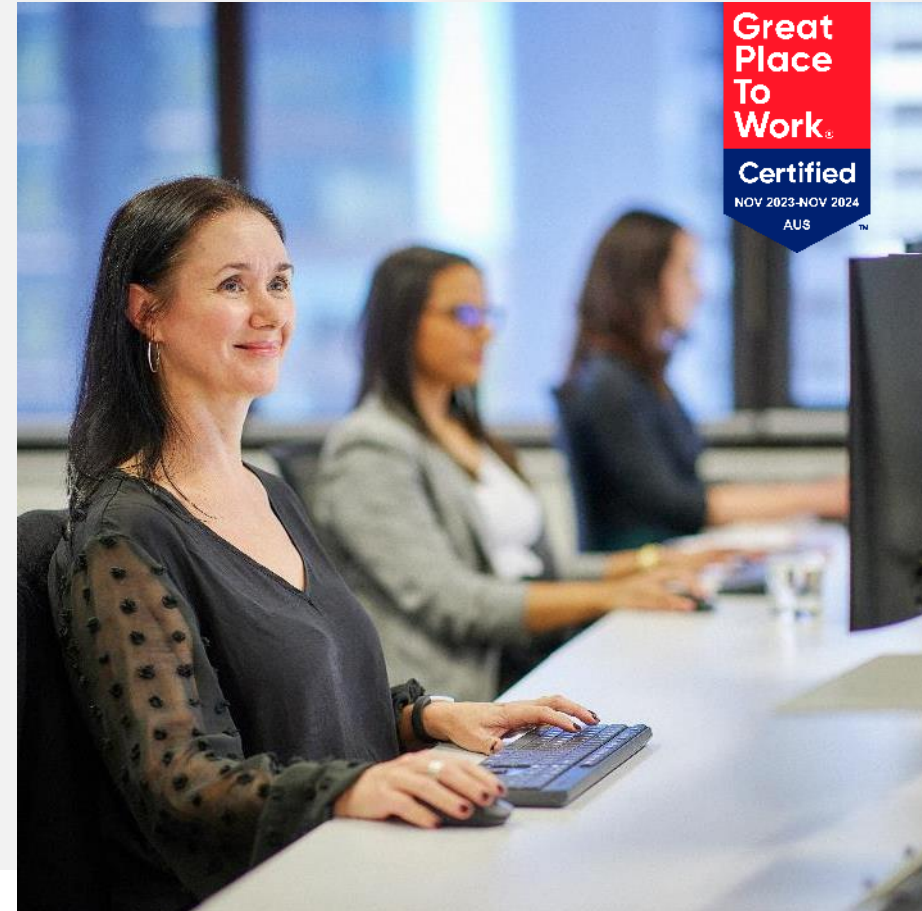
50-strong team of passionate consultants



15 years of doing work for impact



Connected to the community



Every industry is unique

We develop fit-for-purpose approaches



Local, State and
Federal Government



Not-for-Profit



Healthcare



Private Sector



State Public Sector



ICT Industry



Higher Education



Financial Services
and Insurance



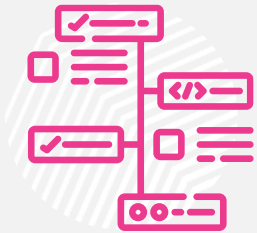
Why choose GWI?

Supporting your enterprise data management and operations



Expertise

Our team of data professionals has a wealth of experience in managing, optimising, protecting and securing data assets across a diverse range of industries.



Customised Solutions

We understand that every business is unique. Our services are tailored to your maturity, your specific goals and challenges. We work with you to solve complex business problems.



Scalability

Whether you are a small startup or a large enterprise, our solutions grow with your business. We help build trusted foundations that enable you to scale your data practices and operations to enable meaningful use of data into the future.



Compliance

We keep abreast of ever-evolving data regulations, ensuring your data management practices align with the latest standards.

Don't let the **potential of your data** lie dormant.

Work for impact

How GWI delivers value for our customers

gwiadvisory

MANAGEMENT CONSULTING FOCUSED ON EVIDENCE AND IMPACT

For over 13 years, GWI has been delivering high quality strategy, advisory and design work. We combine deep experience, insights, and evidence to deliver exceptional solutions to complex problems.

- Data and Information
- Technology Advisory
- Strategy and Public Policy

gwi.digital

YOUR DATA AND DIGITAL IMPLEMENTATION TEAM.

Our delivery arm, gwi.digital, make data and digital dreams a reality. gwi.digital builds, implements, supports and manages data platforms and core IT systems.

- Data Platforms
- Core System Implementation
- Managed Services

We are passionate about helping our community

Our deep sense of social responsibility helps to define us



techgirls»
movement
FOUNDATION

Supporting girls in STEM

Encouraging girls and women to pursue a career in Science, Technology, Engineering and Mathematics (STEM) toward greater diversity in the tech sector.



StandbyU
Foundation

Domestic & Family Violence Prevention

Fiercely passionate about eradicating gendered, domestic and family violence, sponsors three StandbyU Shields which use smart watch technology to support DFV victims by connecting them to loved ones when they might be in danger.



Ecologi
climate
positive
workforce

Environment & Sustainability

Proudly carbon neutral following an independent assessment of our annual greenhouse gas (GHG) emissions revealed that GWI emits 75% less GHGs than our industry average, and funding carbon reduction programs and reforestation initiatives through Ecologi. Visit [this page](#) to see the growing GWI forest and the global impact



autism
queensland

Autism Awareness & Support

GWI CEO, Neil Makepeace, is Chair of **Autism Queensland**, and has been a Board member since 2017. GWI allocates time and resources pro bono to help Autism Queensland achieve its vision of a life of participation, opportunity and choice for people on the autism spectrum.



CQUniversity
AUSTRALIA

Access to Higher Education

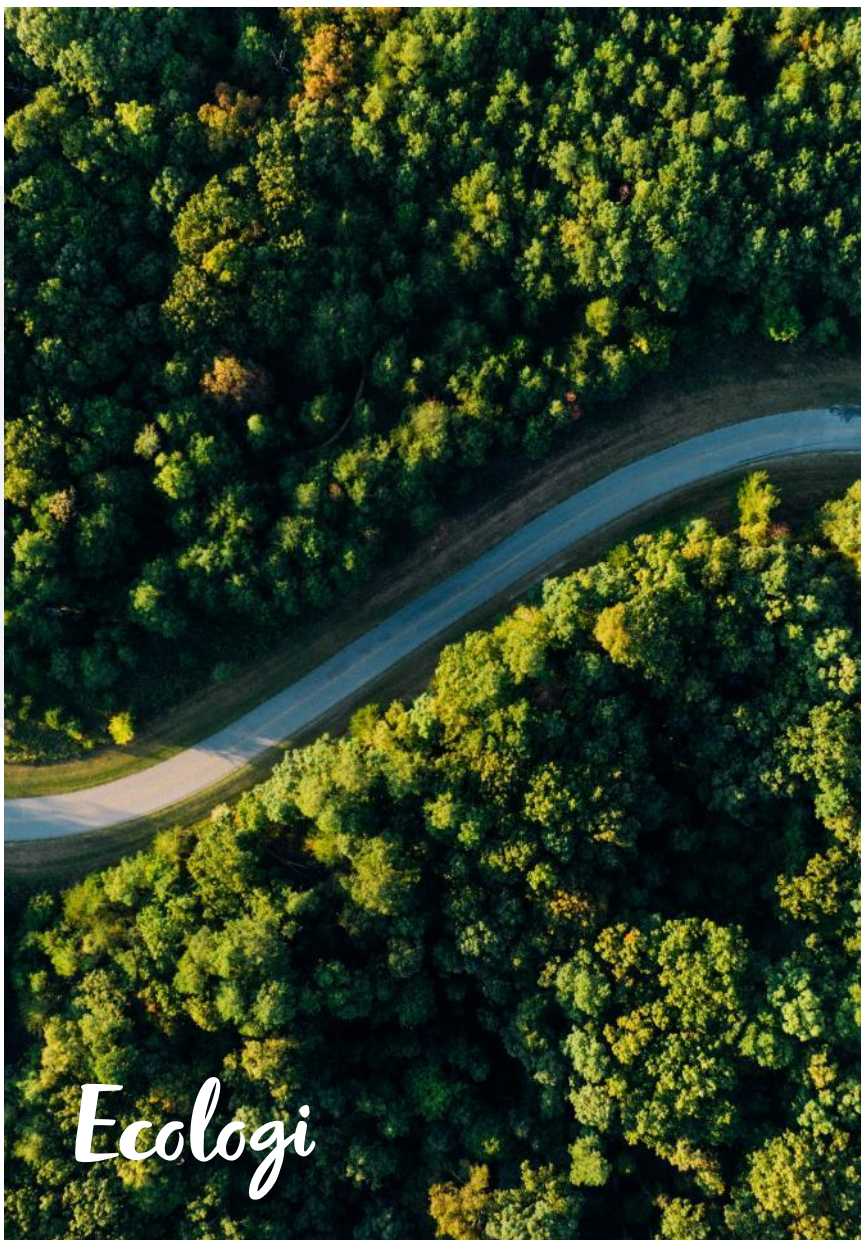
Ensuring yearly that two well-deserving students who have faced hardship or disadvantage, can continue their studies with the help of the **CQUniCares GWI Scholarship**.



Thriving Queensland
Kids Partnership
connect • catalyse • learn

Child Safety and Youth Justice

Leveraging data, information and technology to safeguard children and young people, with particular gratitude to supporting and advising the **Thriving Queensland Kids Partnership** on the use of data and evidence to improve the opportunities and outcomes for children and young people in Queensland.



Environment & sustainability

We are doing our part to help protect our planet

An independent assessment of our annual greenhouse gas (GHG) emissions revealed that GWI emits 75% less GHGs than our industry average. Through **Ecologi**, we help fund reforestation, carbon reduction, and carbon offsetting projects across the globe, whilst also offsetting our own CO2 emissions. Through this program, **GWI is proudly carbon neutral**. Follow [this link](#) to see the positive impact we have created with Ecologi.



4,702
trees funded



769.82 tonnes
of CO2e avoided



25 months
of climate impact

We are proud of our contribution

We've transformed the way data is governed, shared and housed for multiple State and Federal departments in the environmental sector. This work has allowed teams to fully realise and harness the value of their data, increase collaboration and information sharing, helped develop stronger insights for the protection of the environment, and strengthened the prioritisation of resources and investments.



Planning,
Industry &
Environment



Diversity & inclusion

We strive to be an employer of choice

Our vision is to be an exceptional team that creates lasting differences for our customers. In 2022, GWI won **Women in Technology's Employer of Choice Award** for small to medium businesses.

We are fortunate to have a richly diverse workforce – and we are stronger for it. GWI embodies gender diversity, and we employ team members from every part of the globe. Each team member contributes something unique and enriches our team. GWI is proudly **Great Place to Work® Certified™**.



that GWI does not reject
people for being different

100%
of the team believe



that work is allocated
fairly, regardless of gender

GWI is an equal opportunities employer. Our policies ensure equity and consistency in the management of recruitment, selection and induction of new employees for any position within GWI. We support and encourage flexible working arrangements around hours and location. GWI is a digitally enabled business. Even prior to the global pandemic which saw our team working remotely, we have successfully provided flexible working arrangements for our team.



COMMERCIAL IN CONFIDENCE

Our goals

WORK for
IMPACT

TRUST through
EVIDENCE

EMPLOYER of
CHOICE

Our values

IMPACTFUL.

We work for impact.

RELENTLESS.

We are relentless in our pursuit of customers' outcomes.

RESPONSIVE.

We are responsive to our customers and focused on what they value.

SUPPORTIVE.

We care about and rally around each other and our customers, because we know we're better together.

UNBIASED.

We deliver unbiased advice that is data-driven and evidence-based.

INTEGRITY.

We always act with integrity.

Our methodology

We are underpinned by robust processes

We believe there is no single way to solve problems. We understand that each situation exists in a unique environment defined by many factors including behaviours, capability, influences, assumptions and risk appetite.

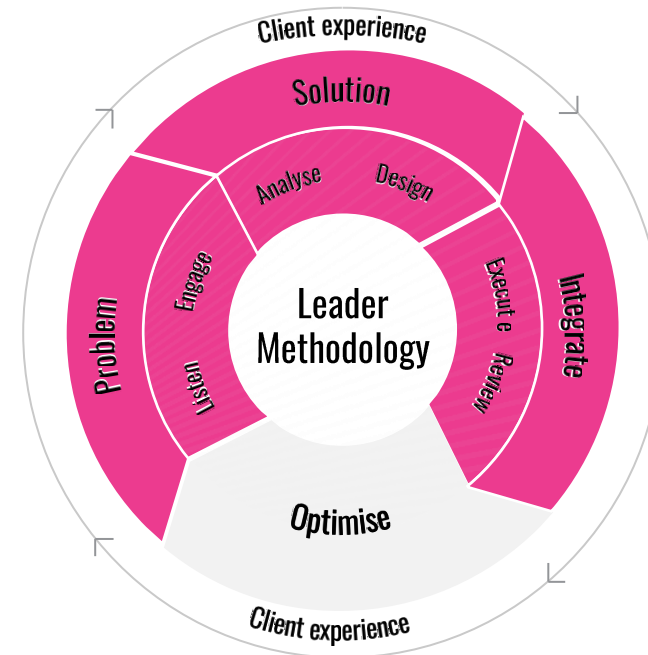
This is why GWI has developed a detailed understanding of several collaborative consulting methods for identifying and engaging stakeholders, defining problems, designing solutions, effecting change and realising benefits.

We consistently find we are able to gain a better understanding of information related problems through a tailored approach, rather than following a traditional requirements gathering methodology.

We help our clients better understand the market for information in their organisation by identifying the demand and supply through examining:

- Formal structures, core business processes and activities
- Informal networks, practices and workarounds
- Roles, responsibilities, capabilities and relationships
- Perceptions, behaviours and attitudes
- Business, information and technology architectures
- Strategic direction and operational plans
- Corporate risks and internal and external audit issues
- Previous attempts by the organisation to solve this problem (internal and external)

To ensure that each engagement is successfully delivered, we employ our six-phase LEADER consulting delivery methodology that captures all of the details of an engagement.



gwiadvisory

All GWI's advisory work is underpinned by rigorous internal processes that meet applicable international standards, including ISO 9001.



Our track record

Government – Federal, State and Local



Higher Education



Environment and Sustainability



Public Safety and Justice



Health and Social Services



Not-for-Profit Associations



Information and Communication Technology



Transport and Logistics



Resources and Mining



Engineering, Construction and Utilities



Finance, Insurance and Investment



gwi

GWI.COM.AU

in 